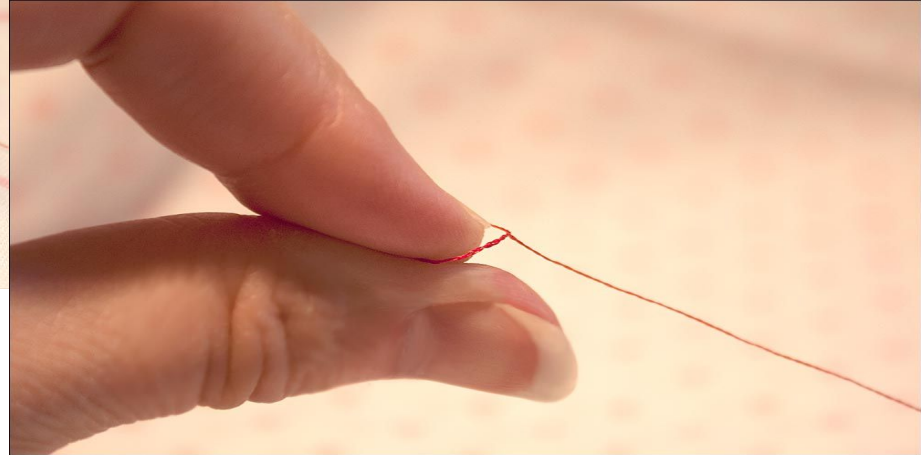
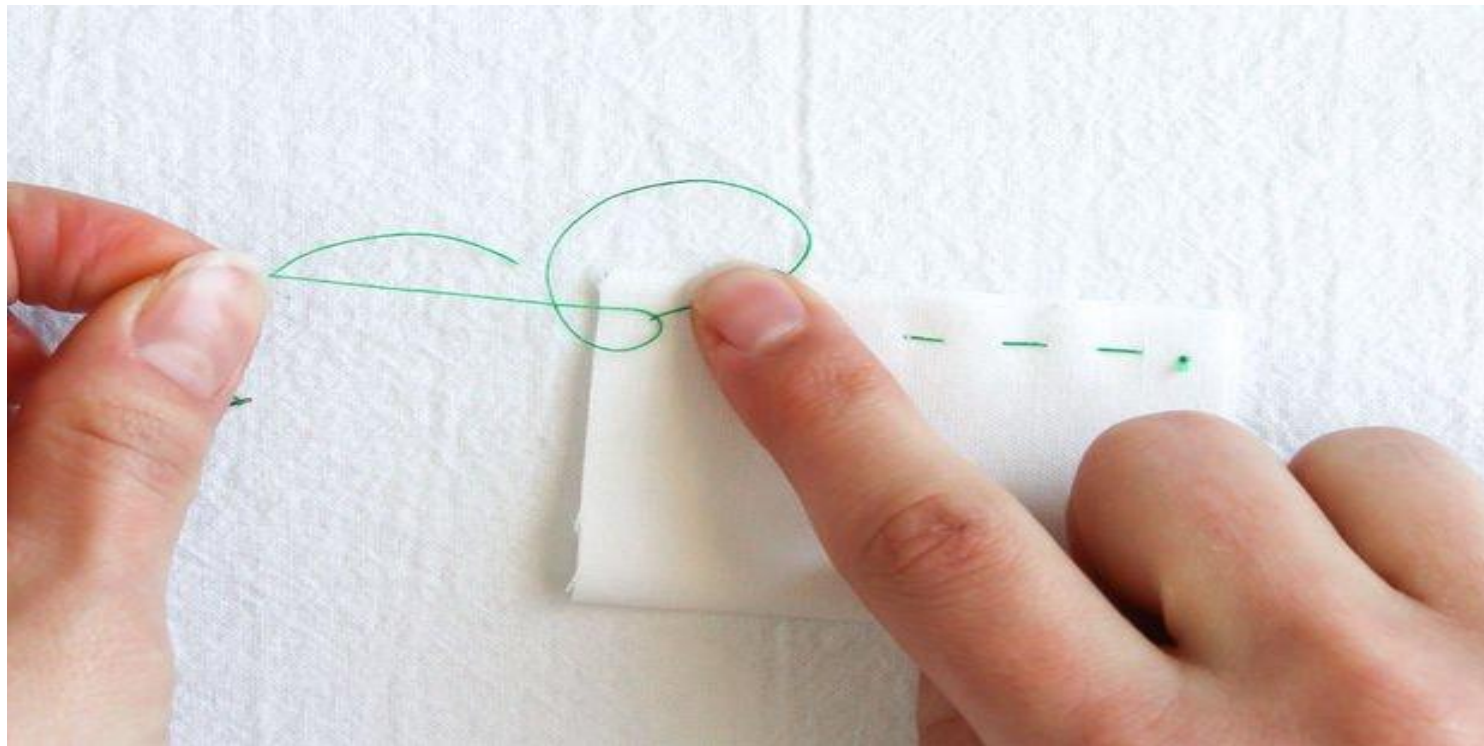


Tie a large knot in the end of your thread (starting knot)



Tie a knot close to your fabric (ending knot)



Mountain stitch or Catch stitch for hems

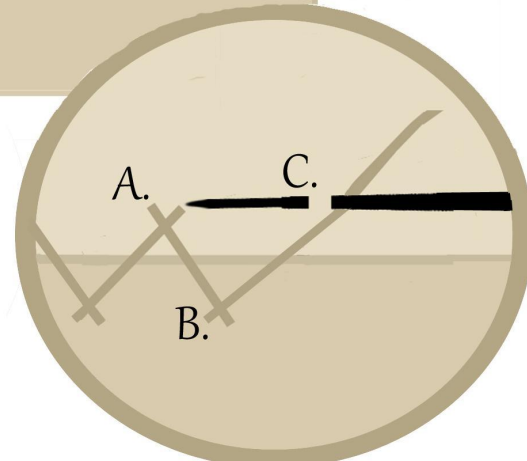
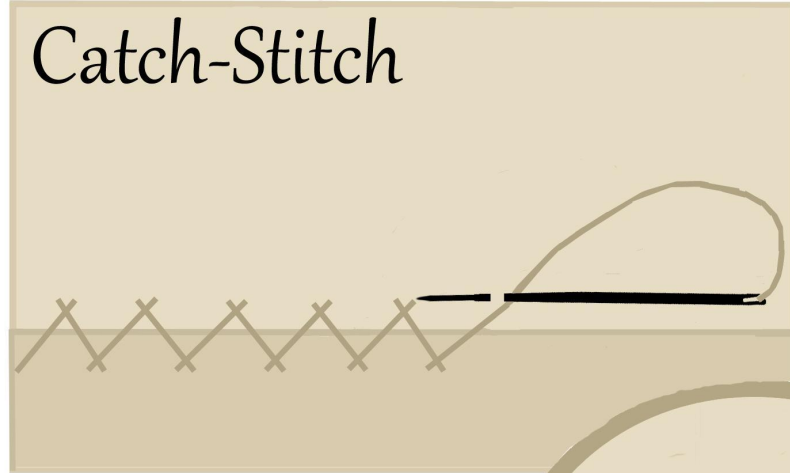


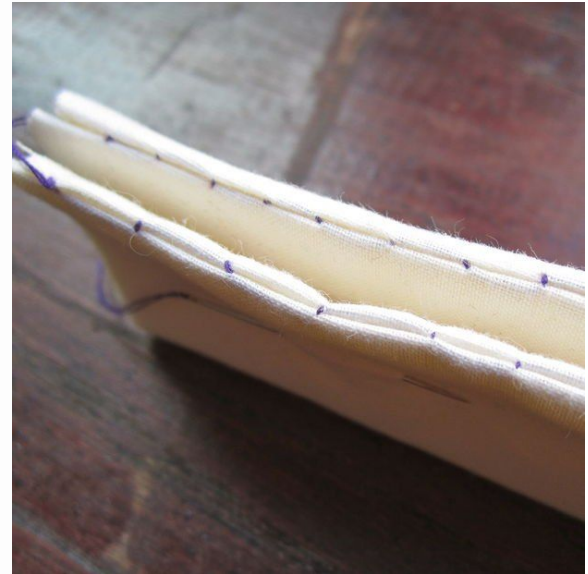
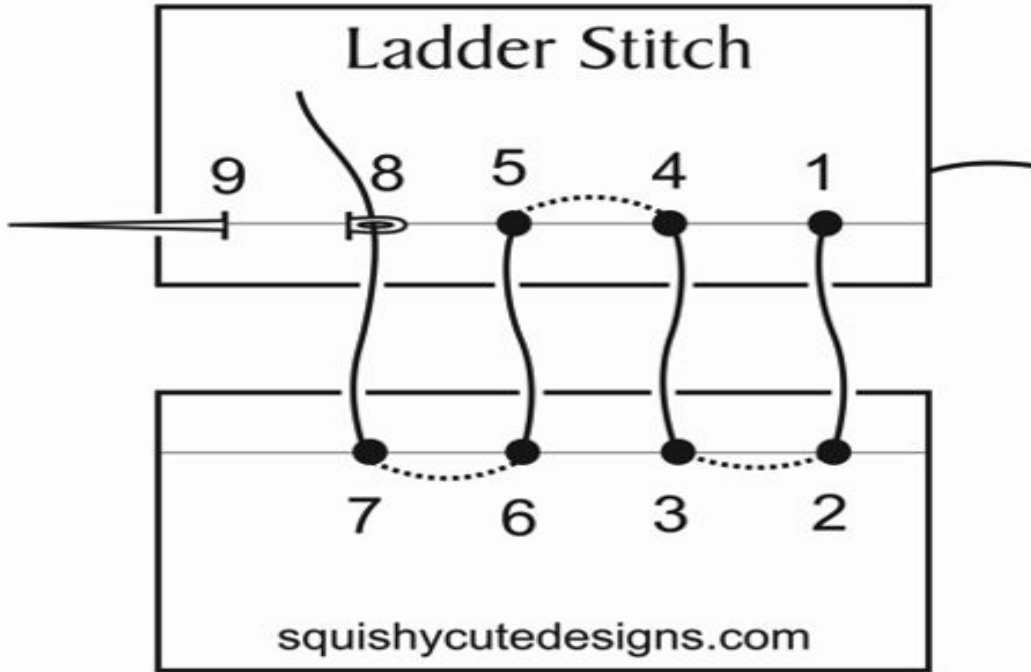
Image from this site with other basic stitches:
<http://yesterdaysthimble.com/tutorials/basic-hand-sewing/>

Button tutorial- click the link for steps



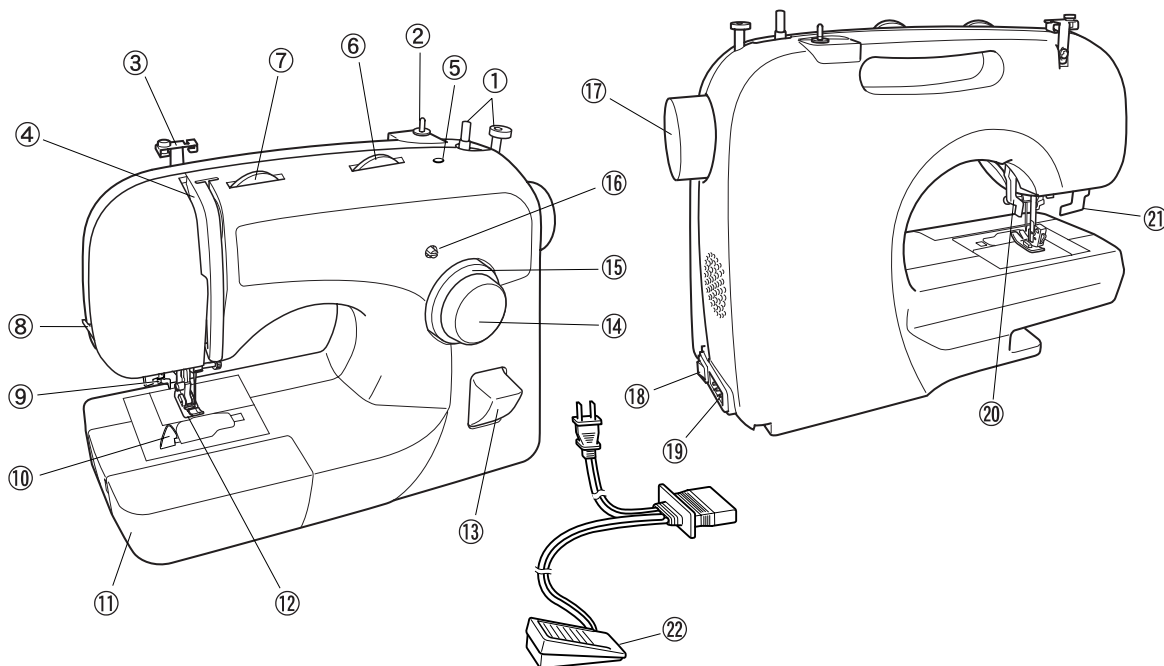
<https://www.ties.com/blog/how-to-sew-a-button>

Slip/ladder stitch examples



1 KNOWING YOUR SEWING MACHINE

THE MAIN PARTS



- ① **Bobbin winder (page 26)**
This winds the thread onto the bobbin for use as the lower thread.
- ② **Spool pin (page 27, 32)**
This holds the spool of thread.
- ③ **Thread guide (page 27, 32)**
This is used when winding the thread onto the bobbin and then threading the machine.
- ④ **Thread take-up lever (page 33)**
- ⑤ **Hole for extra spool pin (page 37)**
This holds a second spool of thread for sewing with the twin needle.
- ⑥ **Stitch width dial (page 25)**
This controls the stitch width.
- ⑦ **Upper tension-control dial (page 38)**
This controls the tension of the upper thread.
- ⑧ **Thread cutter (page 43)**
Pass the threads through the thread cutter to cut them.
- ⑨ **Needle threader (page 34)**
(This is only available on certain models.)
- ⑩ **Quick-set bobbin (page 30)**
(This is only available on certain models.)
- ⑪ **Flat bed attachment with accessory compartment (page 19)**
- ⑫ **Presser foot (page 18)**
- ⑬ **Reverse sewing lever (page 25)**
You can push this to stitch in the reverse direction.
- ⑭ **Pattern selection dial (page 20)**
You can turn this in either direction to choose the stitch you want.
- ⑮ **Stitch length dial (page 24)**
This controls the stitch length.
- ⑯ **Buttonhole fine-adjustment screw (page 54)**
- ⑰ **Handwheel**
Used to manually raise and lower the needle.
- ⑱ **Main power and sewing light switch (page 15)**
You can turn the main power and sewing light switch on and off.
- ⑲ **Foot controller jack / socket (page 15)**
Plug in the foot controller plug and connect the machine to the power supply.
- ⑳ **Presser foot lever (page 32)**
Used to raise and lower the presser foot.
- ㉑ **Buttonhole lever (1-Step automatic buttonhole) (page 52)**
Lower the buttonhole lever when sewing buttonholes.
- ㉒ **Foot controller (page 15)**
You can use this to control the sewing speed, and to start and stop sewing.

Parts Code for Zigzag Presser Foot: XC4901-051

Foot Controller: Model KD-1902

Parts Code: XC7359-022 (110/120V Area)

XC7438-222 (220/240V Area)

XC7456-222 (U.K.)

XC7455-022 (Australia, New Zealand)